

IN THIS SECTION...

SEATS & TRIM

Cubby boxes	57-58
Door trim	58
Extended slide seat rails & bulkhead bars	59
Fume curtain	59
Re-trim kits - Defender	59
Seats - Defender & Series	60
Seats - Techno style	61
Seats - XS style	62
Window kits	63



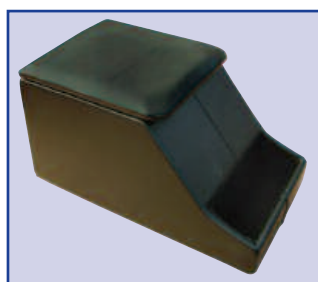
CUBBY BOXES

Defender Cubby Boxes

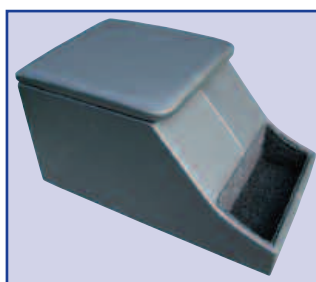
With a Britpart cubby box in your Land Rover you can ensure your vehicle remains clutter free with these handy storage devices. We've even got one with cup holders to make sure spilt drinks are a thing of the past. If security is a worry, then peace of mind can be achieved with our cubby boxes made from metal with a padded lid which is lockable.

	Top	Body	
DA2035	Black	Black	
DA2035LCS	Grey	Grey	
DA2035RPI	Vinyl twill	Grey	
DA2035T	Techno	Black	
DA2036	Techno	Grey	With 2 cup holders
DA2149	Grey	Black	Security box - 2 keys & 3 removable cup holders

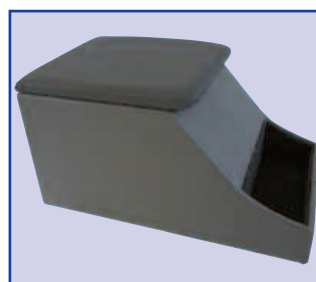
Keep your Defender clutter free!



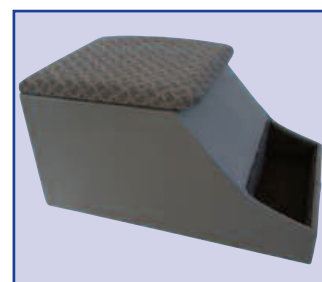
DA2035



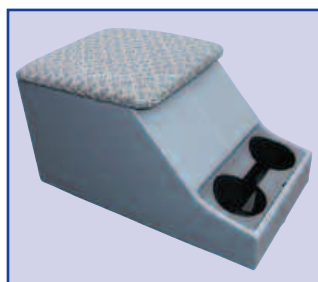
DA2035LCS



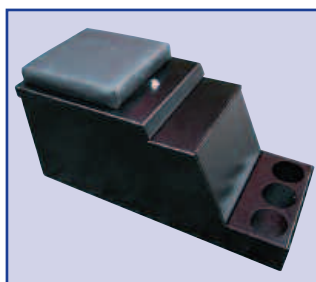
DA2035RPI



DA2035T



DA2036



DA2149

More cubby boxes overleaf...



Britpart Service Kits

- see service kits and filters section for full details!

CUBBY BOXES - continued

XS Style Cubby Boxes

Hand-built in the UK, these quality XS style cubby boxes are suitable for Series 3 and Defenders. Well crafted with precision tools using a hard wearing leatherette outer and velour trim inner. Each box has locking stay brass hinges. These XS Style cubby boxes match our range of XS Style seats - see this section.

	Top	Body
DA2035BLUE	Blue	Black
DA2035BROWN	Light brown	Dark brown
DA2035CHAR	Charcoal	Black
DA2035GREEN	Green	Black
DA2035GREY	Light grey	Dark grey

Swatches

Material colours are an approximate match. Sample swatches of the actual material are available on request.



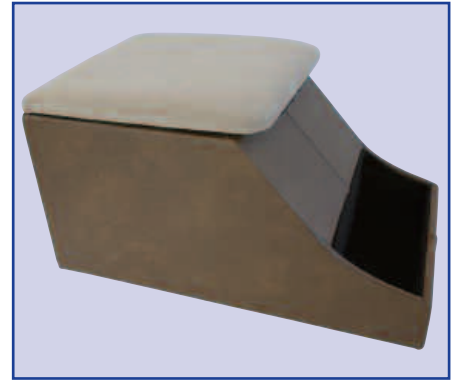
VINYL TWILL



TECHNO



BLUE



XS STYLE CUBBY BOX



LIGHT BROWN



CHARCOAL



GREEN



LIGHT GREY

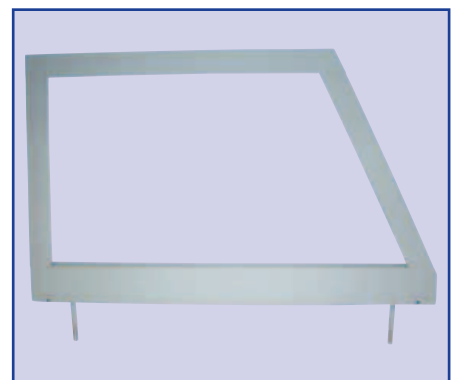
Everything required for **servicing, repairing, restoring** or even **rebuilding** any Land Rover can be supplied by Britpart, thus enabling customers to order all they need on just one order sheet making it easy to keep track of stock and take delivery.

DOOR TRIM

ALR6852	Defender	Rear door - less spare wheel carrier From MA939976 to 1A622423	
STC1424	Defender	Rear door - less spare wheel carrier From AA242000 to KA929577	
DA4143	Defender	Front door skin - push button handle	RH
DA4144	Defender	Front door skin - push button handle	LH
DA1099	Defender/Series	Rear door cladding	
DA2024	Defender/Series	Door skin safari - rear	
DA2124	Defender/Series	Door trim safari - rear	
RTC6247	Defender/Series	Safari rear door Unglazed with spare wheel	
RTC6248	Defender/Series	Safari rear door Glazed without spare wheel	
RTC6248NG	Defender/Series	Safari rear door Unglazed without spare wheel	
395529	Series	Door bottom	RH
395530	Series	Door bottom	LH
DA2002	Series	Window channel 2m length	
DA2007	Series	Door rubber 30m roll	
DA2023N	Series	Door skin	N/S
DA2023O	Series	Door skin	O/S
DA2029	Series	Door trim lower	RH
DA2030	Series	Door trim lower	LH
DA2032	Series	Door trim upper	LH
DA2034	Series	Arm rest for DA2028	LH
DA2169	Series	Door top seal and caulk	
DA4086	Series	Door bottom repair	
MTC5382	Series	Door top unglazed	RH
MTC5382G	Series	Door top glazed	RH
MTC5383	Series	Door top unglazed	LH
MTC5383G	Series	Door top glazed	LH



DA2029



MTC5382

EXTENDED SLIDE SEAT RAILS & BULKHEAD BARS

DA2148

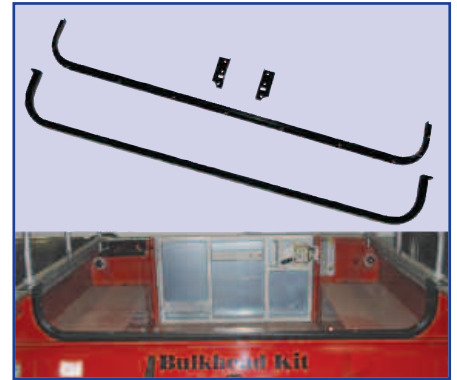
Give your Defender seats 3" of extra slide with a pair of these seat rails. Ideal for the taller driver to give a more practical and comfortable driving position. One pair of rails is suitable for one seat

> Ideal for the taller driver

> A more practical and comfortable driving position



DA2148



DA2351

DA2351

Up until recently, Land Rover hasn't catered (in the Defender) for the people with stature. The bulk head removal bar alleviates the problem without compromising strength. The bulk head removal bar allows an extra 105mm of seat rake at the top and 50mm of travel on the seat base. The tubular bar creates a rigid bracing for the front of the Defender tub. As well as the added benefits of extra room in the vehicle due to the seats been more manoeuvrable, access to the rear of the Defender is now not compromised by a higher bulk head. Powder coated and supplied complete with all the necessary fixings.

FUME CURTAIN

MRC3519

Series & Defender

Note - Metal bar not included



MRC3519

RE-TRIM KITS - DEFENDER

Going off-road? Got a working Land Rover? Well the chances are your seats won't be in showroom condition, luckily here at Britpart we have the answer - a Defender re-trim kit.

A complete Britpart re-trim kit includes:

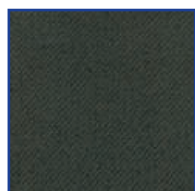
- 1 x Fitment guide CD - This 20 minute tutorial will give you a detailed step-by-step guide to disassembling and assembling your Defender seat and information on the correct use of the included parts.
- 1 x Can of contact adhesive spray
- 1 x Squab foam
- 1 x Squab cover
- 6 x Plastic nails
- 3 x Cable ties
- 1 x Cushion foam
- 1 x Cushion cover
- 1 x Headrest cover
- 2 x Metal rods
- 1 x Rubber retainer

DA5627	Vinyl twill
DA5628	Techno
DA5629	Black
DA5630	Grey

Breathe life back into your old saggy Defender seats with a Britpart re-trim kit.



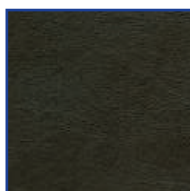
DA5628



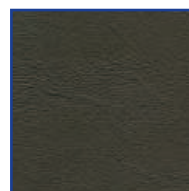
VINYL TWILL



TECHNO



BLACK



GREY

Swatches

Material colours are an approximate match. Sample swatches of the actual material are available on request.

SEATS - DEFENDER & SERIES



The highly skilled team in the Trim Shop make a wide range of seats and seat covers for Land Rover vehicles by hand. The material arrives in vast reams and has to be cut with great precision before being stitched together and then assembled into seat bases, seat backs, seat benches etc. In keeping with the Britpart philosophy, all products leaving the Trim Shop are produced to the highest standards and meet with the strictest safety regulations.

Defender Seats

DA4028	Seat cover	Base outer	Black
DA4041	Seat cover	Back outer	Black
MWC3302	Seat	Back RH	Black
MWC3303	Seat	Back LH	Black
MWC4535	Seat	Base outer	Black
MWC1010	Headrest assembly		Black
DA4029	Seat cover	Base outer	Grey
DA4042	Seat cover	Back outer	Grey
MWC5670LCS	Seat	Base outer	Grey
MWC9843LCS	Seat	Back LH	Grey
MWC9844LCS	Seat	Back RH	Grey
AWR5701RPI	Seat cover	Base outer	Vinyl twill
AWR5702RPI	Seat cover	Back outer	Vinyl twill
AWR5708RPI	Headrest assembly		Vinyl twill
AWR5700RPI	Seat	Base outer	Vinyl twill
BTR8140RPI	Right hand assembly	Less headrest	Vinyl twill
BTR8141RPI	Left hand assembly	Less headrest	Vinyl twill
DA4031	Seat foam	Base outer	
DA4055	Seat foam	Back outer	
DA4056	Seat foam	Centre to 07/95	

Defender & Series Seats

320737	Bench seat	Rear assembly SWB	Black
DA3059	Bench seat	Rear assembly LWB	Black
DA4067	Rear seat	Individual inward facing	Black
320737CB	Bench seat	Rear assembly SWB	County brown
320737CG	Bench seat	Rear assembly SWB	County grey
320737LCS	Bench seat	Rear assembly SWB	Grey
DA4075	Rear seat	Individual inward facing	Grey
320737T	Bench seat	Rear assembly SWB	Techno style
DA4075T	Rear seat	Individual inward facing	Techno style
320737RPI	Bench seat	Rear assembly SWB	Vinyl twill
DA4075RPI	Rear seat	Individual Inward facing	Vinyl twill

Series Seats

320698	Seat back - pin fitment - adjustable	Standard outer	Black
320699	Seat base - adjustable	Standard outer	Black
320726	Seat base	Standard centre	Black
349967	Seat base	Standard outer	Black
MRC6980	Seat base	Deluxe outer	Black
MRC6982	Seat back	Deluxe outer	Black
MRC6982H	Seat back with headrest	Deluxe outer	Black
MRC6985	Seat base	Deluxe centre	Black
MTC3181	Seat back	Deluxe centre	Black
MUC1488	Seat back	Standard centre	Black
MUC1520	Seat back - pin fitment	Standard outer	Black
MUC1520G	Seat back - bolt fitment	Standard outer	Black



A COMPLETE BRITPART SEAT



MRC6985



320737

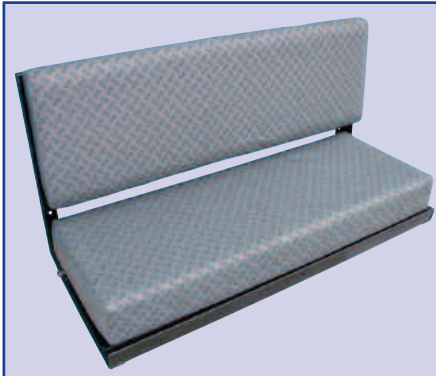


MRC6982

SEATS - TECHNO STYLE

Hand-built in the UK, these quality seats with the ever popular 'Techno' pattern are suitable for 90, 110 and Defenders. Well-crafted with precision tools using a hard wearing velour trim. Comfort is ensured with injection moulded foam.

HAG100970LOY	Base	
HCA106010LOY	Cover base	
HAJ101400LOY	Squab assembly - no pockets	Right hand side
HAJ101410LOY	Squab assembly - no pockets	Left hand side
HBA106190LOY	Squab cover - no pocket	
HBA106180LOY	Squab cover - with pocket	
HAH103510LOY	Headrest	
320737T	Rear seat assembly	
DA4075T	Rear seat individual inward facing	
HDD102280	Runner & sub-frame	Right hand drive
HDD102290	Runner & sub-frame	Left hand drive

**320737T****TECHNO****Swatch**

Material colour is an approximate match. A sample swatch of the actual material are available on request.

**TECHNO STYLE SEAT****BE PART OF IT!**

SEATS - XS STYLE



DA5610 & DA5611



DA5612 & DA5613



DA5614 & DA5615



DA5616 & DA5617



DA5618 & DA5619

Hand-built in the UK, these quality XS style seats are suitable for 90, 110 and Defenders. Well-crafted with precision tools using a hard wearing leatherette outer and velour trim inner. Comfort is ensured with injection moulded foam. Seats complete with base, back and headrest but the runners are not included.

	Outer	Inner	Side
DA5610	Dark grey	Light grey	Right
DA5611	Dark grey	Light grey	Left
DA5612	Black	Green	Right
DA5613	Black	Green	Left
DA5614	Black	Blue	Right
DA5615	Black	Blue	Left
DA5616	Dark brown	Light brown	Right
DA5617	Dark brown	Light brown	Left
DA5618	Black	Charcoal	Right
DA5619	Black	Charcoal	Left
HHD102280	Runner & sub-frame		Right hand drive
HHD102290	Runner & sub-frame		Left hand drive

Comfort is ensured

Swatches

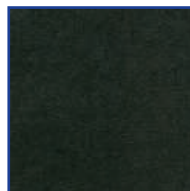
Material colours are an approximate match. Sample swatches of the actual material are available on request.



BLUE



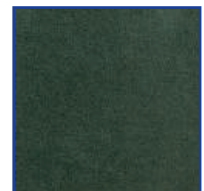
LIGHT BROWN



CHARCOAL



LIGHT GREY



GREEN



Need a dog guard?
See interior protection section!

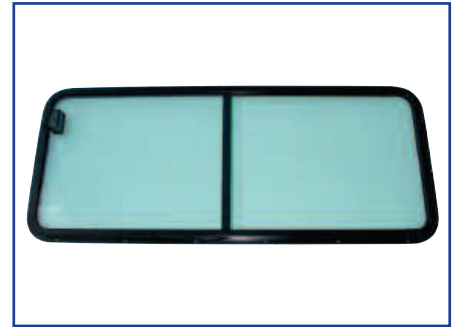
WINDOW KITS



DA4032GREY



DA4033



DA4033GREEN

Standard

DA4032	Clear
DA4032GREEN	Green tinted
DA4032GREY	Grey tinted
DA4032BRONZE	Bronze tinted

Standard kits have metal catch

Deluxe

DA4033	Clear
DA4033GREEN	Green tinted
DA4033BRONZE	Bronze tinted

Deluxe kits have rubber mounting strips to cover rivets and plastic catch

Light guards
- exterior protection section

